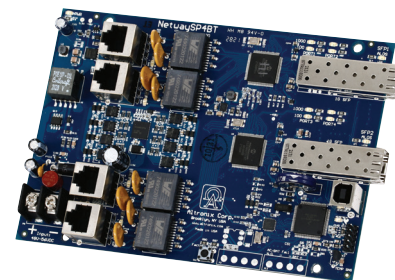


NetWaySP4BTB

4-port Hardened 4PPoE (802.3bt) Switch



Altronix NetWaySP4BTB switch board supports up to 90W per port (320W total power) for deploying the latest high-powered IP devices in remote locations. It is equipped with two (2) 1Gb SFP ports to transmit data at long distances and four (4) 802.3bt compliant Ethernet ports. NetWaySP4BTB accommodates single/multi-mode fiber or composite cable (fiber+copper) to simultaneously deliver power and data from NetWay Spectrum head-end media converters/injectors. Embedded LINQ Technology allows to monitor, control, and report power and diagnostics from anywhere.



NetWaySP4BTB

Key Features

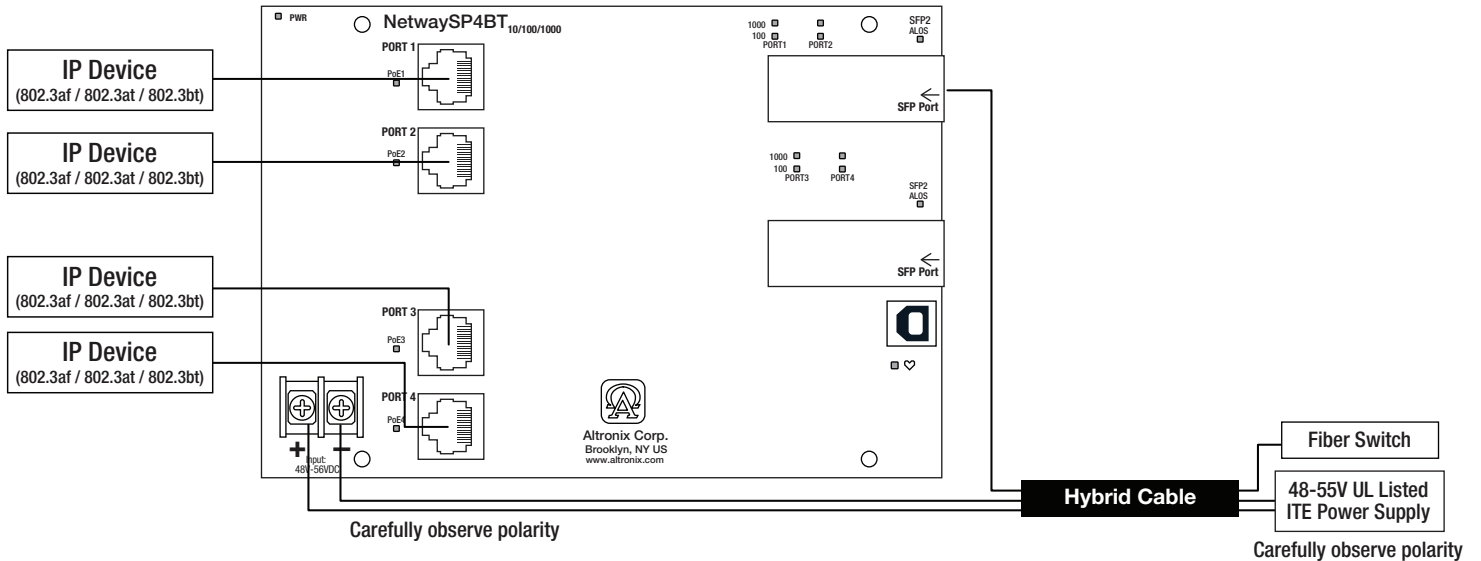
- External 48-55V UL Listed ITE power supply required
 - IEEE 802.3af, 802.3at, 802.3bt compliant
 - Four (4) 10/100/1000 Mbps Ethernet ports rated at 90W each (limited to 320W total power)
 - Two (2) Gigabit SFP ports
 - PoE activity LED indicators
 - VLAN (Virtual Local Area Networks) subnetwork allows for the grouping together of devices for improved network traffic and higher security
 - CE European Conformity
- LINQ Technology:
- Remote network management allows for camera/device reset and diagnostic monitoring
 - Provides local and/or remote access to critical information via LAN/WAN
 - Email and Windows Dashboard Alert notifications report real-time events
 - Event log tracks history

Similar products

NetWaySP4BTWPX	Outdoor 4-port Hardened 4PPoE Switch with Integral Power in NEMA 4/4X, IP66-11 enclosure which accommodates stand-by batteries
NetWaySP4BTWP	Outdoor 4-port Hardened 4PPoE Switch with Integral Power in NEMA 4/4X, IP66-11 enclosure
NetWaySP4BTWPN	Outdoor 4-port Hardened 4PPoE Switch in NEMA 4/4X, IP66-11 enclosure
NetWaySP4BTX	Indoor 4-port Hardened 4PPoE Switch in NEMA 1 Rated indoor enclosure
NetWaySP4BTPL	4-port Hardened 4PPoE Switch with Integral Power on a Backplane

Lifetime Warranty

Typical Composite (Fiber + Copper) Application



Lifetime Warranty

NetWaySP4BTB

4-port Hardened 4PPoE (802.3bt) Switch



Specifications

Input 48V-57V (UL Listed ITE power supply)

Output Four (4) 10/100/1000 Mbps Ethernet ports rated at 90W each (limited to 320W total power) IEEE 802.3af, 802.3at, 802.3bt compliant

SFP Ports: Two (2) Gigabit SFP ports

Ethernet Ports: Four (4) 10/100/1000 Mbps ports
Connectivity: RJ45, auto-crossover
Wire type: 4-pair CAT5e or higher structured cable
Speed: 10/100/1000 Mbps, half/full duplex, auto negotiation

Indicators (LED)

Individual PoE On LEDs for each port
Individual IP Link status, 10/100/1000 Base-T/active LEDs for each port
ALOS LED indicates fiber connection for SFP port
Heartbeat LED indicates proper operation of the unit

VLAN:

Multiple management VLAN assignment
802.1Q Tagged VLAN
Up to 10 VLAN groups. ID Range 2-4095.

LINQ Technology:

Remote network management allows for camera/device reset and diagnostic monitoring
Provides local and/or remote access to critical information via LAN/WAN
Email and Windows Dashboard Alert notifications report real-time events
Event log tracks history

Agency Listings

CE European Conformity

Physical and Environmental

Dimensions (L x W x H)

5.625" x 4.5" x 0.625" (158.8mm x 142.9mm x 15.9mm)

Mounting hardware included.

Product Weight: 0.4 lb. (0.18 kg)

Shipping Weight: 0.75 lb. (0.34 kg)

Temperature

Operating (240W): -30°C to 55°C (-22°F to 131°F)

Operating (180W): -30°C to 65°C (-22°F to 149°F)

Operating (150W): -30°C to 75°C (-22°F to 167°F)

Storage -30°C to 85°C (-22°F to 185°F)

Relative Humidity 85% +/-5%.

BTU/Hr (approx.): 61 BTU/Hr.

Operating Altitude: -304.8 to 2,000m

Power Sourcing Equipment and Accessories (order separately)



NetWaySP4PX

(front)

(rear)

NetWaySP4PX - Ethernet to Fiber Media Converter with Integral Power Supply/Charger

4-port Ethernet to Fiber Media Converter for applications utilizing composite (power + copper) or conventional cabling

Unit provides power up to 120W per port (480W total power). Four (4) 1Gb SFP ports.



SFP Modules - Hot pluggable Transceivers

P1MM Multi-Mode SFP Module for distances up to 550m.

P1SM10 Single-Mode SFP Module for distances up to 10km.

P1AB2K Single Strand SFP Module for distances up to 2km.

P1GCE Copper SFP Module for distances up to 100m.



NetWaySP1A

NetWaySP1A - Ethernet over Fiber Media Converter/Repeater for applications requiring an additional SFP (Fiber) Port

NetWaySP1A PoE powered media converter/repeater converts 10/100/1000 Mbps to Fiber (1000Base-X/SX/LX).

Lifetime Warranty